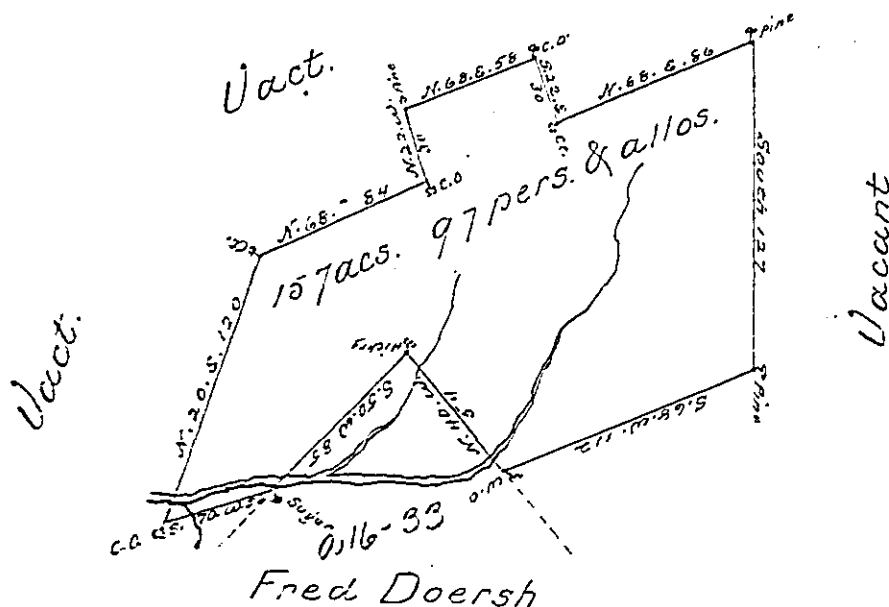


Pg 230-



By virtue of a Warrant dated Jan'y. 22d. 1790 Sur-  
 veyed the 3d. of March 1790 unto Alexander Sillyman  
 the above described Tract of one hundred and fifty seven  
 acres and 97 perches of land and the usual allowance  
 Situated adjoining Land of Frederick Doerish on a  
 small Branch of Chilisquaque Creek in Derry Town-  
 ship Northbd. County.

By Wm. Montgomery N.S.  
 To Daniel Brodhead Esqr. )  
 Surveyor General. )

IN TESTIMONY that the above is a copy of the original remaining on file in  
 the Department of Internal Affairs of Pennsylvania, made  
 conformably to an Act of Assembly approved the 16th day of  
 February, 1833, I have hereunto set my Hand and caused  
 the Seal of said Department to be affixed at Harrisburg,  
 this third day of July 1900

*James W. Latta*  
 Secretary of Internal Affairs.